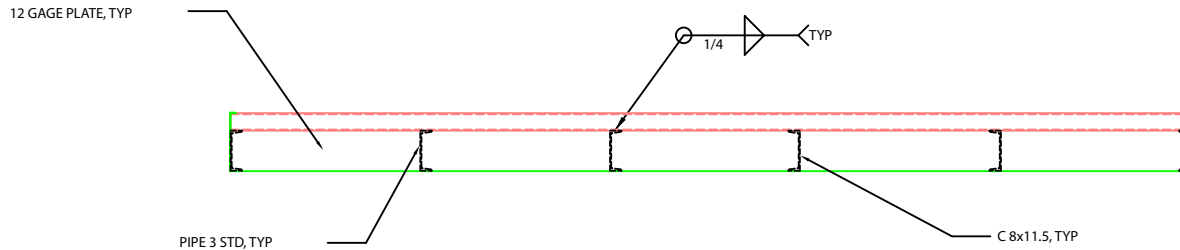


END/ELEVATION VIEW

HS20-CG-16-6-B
PLAN -6'x16' W/ SKIRT
 SCALE: 1/2" = 1'-0"



SIDE/ELEVATION VIEW

NOTES:

1. LOAD CAPACITY - HS20-44 (16,000 LB WHEEL)
2. ALL PLATE AND CHANNEL - A-36 (FY=36 KSI)
3. ALL PIPE - A-53 GRADE B (FY=35 KSI)
4. WELDING ELECTRODE E70XX

DRAWN BY: _____
 CHECKED BY: _____
 DATE PLOTTED: _____
 PROJECT NO: _____
 SHEET NO: _____
 BARN WORLD
 (720) 238-2190
 11757 W. Ken Caryl Ave., F129
 Littleton Colorado 80127 USA

CATTLE GUARD ASSEMBLY
 FOR BARNWORLD.COM
 COLORADO
 (303) 952-0830
 SHEET NO.
S-4
 ISSUE DATE: 11-12-07
 PROJECT NO: 1000000000